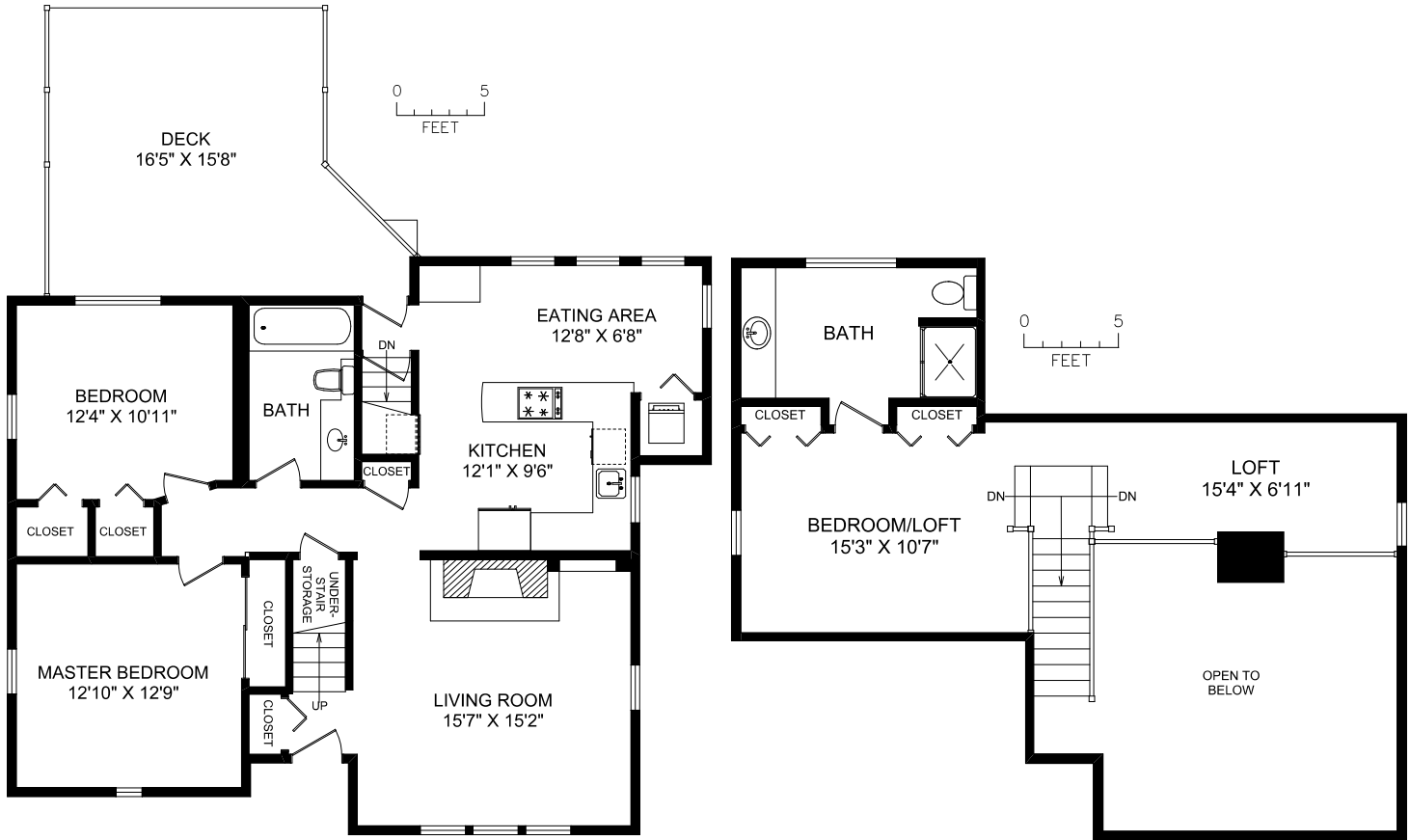
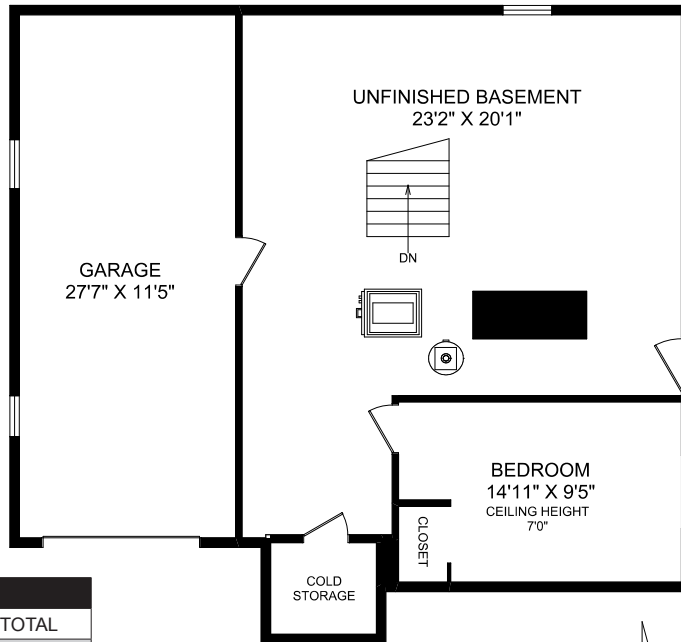


MAIN FLOOR

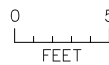
UPPER FLOOR



LOWER FLOOR



| AREA   | SQ FT    |            | TOTAL |
|--------|----------|------------|-------|
|        | FINISHED | UNFINISHED |       |
| FLOOR  |          |            |       |
| MAIN   | 1129     | 0          | 1129  |
| UPPER  | 437      | 0          | 437   |
| LOWER  | 163      | 593        | 756   |
| TOTAL  | 1729     | 593        | 2322  |
| GARAGE |          | 341        |       |
| DECK   |          | 290        |       |



1011 COLVILLE ROAD

MEASURED FOR THE EXCLUSIVE USE OF  
 JOAN SOLBERG & BRUCE MC CULLOCH -  
 SUTTON GROUP WEST COAST REALTY

MEASURED NOVEMBER 9TH, 2009 BY JACOB GALATI



250.388.6998 orders@realfoto.ca www.realfoto.ca

All information furnished regarding this property is from sources deemed reliable but no warranty or representation is made to the accuracy thereof.